

General Operating Fund Analysis Report for February, 2018



NORDONIA HILLS CITY
SCHOOL DISTRICT

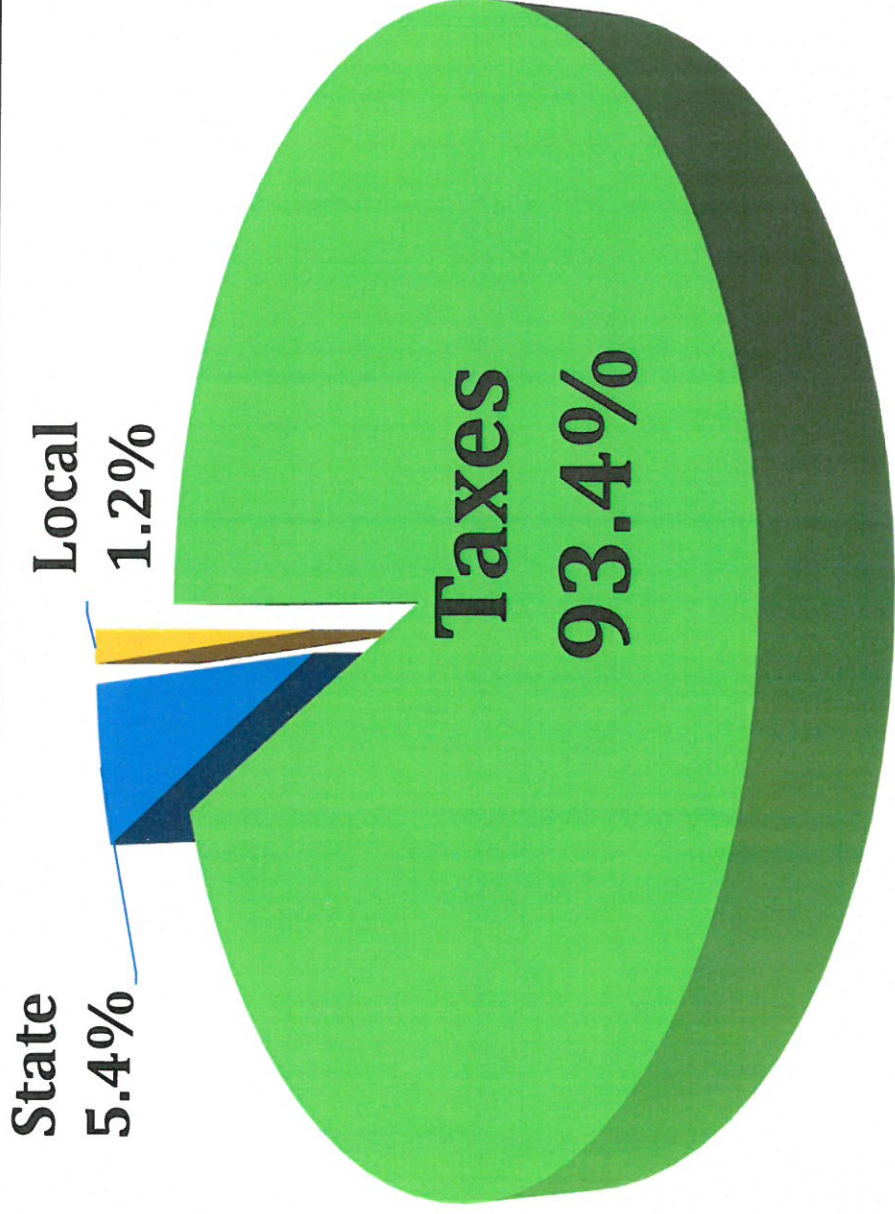
Inspiring every student to value learning, community and excellence

Prepared by: Karen Obratil, Treasurer/CFO
March 19, 2018

Monthly Revenue by the Numbers

February			
FY18		\$	%
Forecast	Actual	Variance	Variance
\$9,257,792	\$7,274,105	(\$1,983,687)	-27.27%

February Revenue - \$7.3M

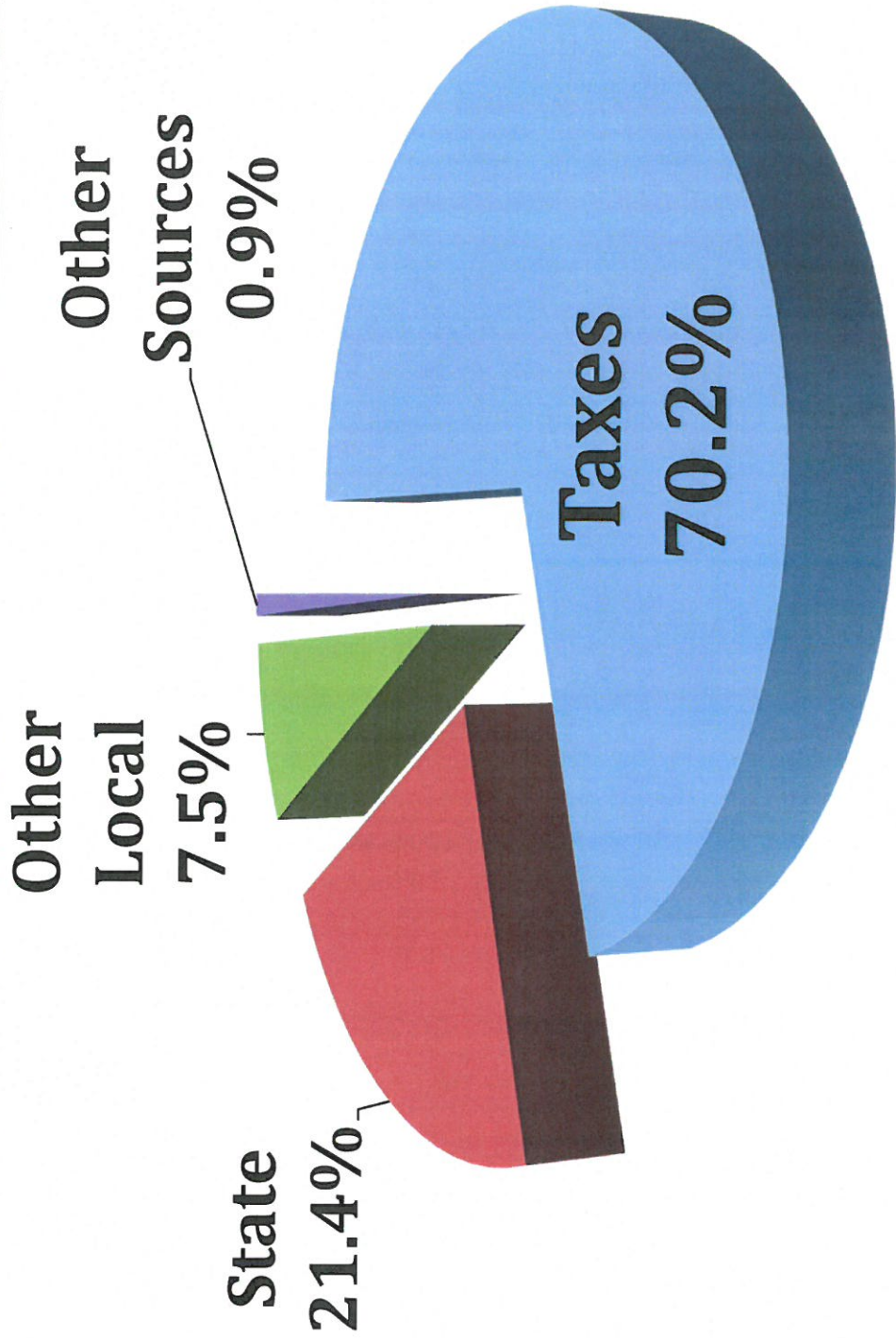


Fiscal Year to Date (FYTD) Revenue by the Numbers

July 1, 2017 to February 28, 2018

FY18		\$	%
Forecast	Actual	Variance	Variance
\$30,911,599	\$29,407,027	(\$1,504,572)	-5.12%

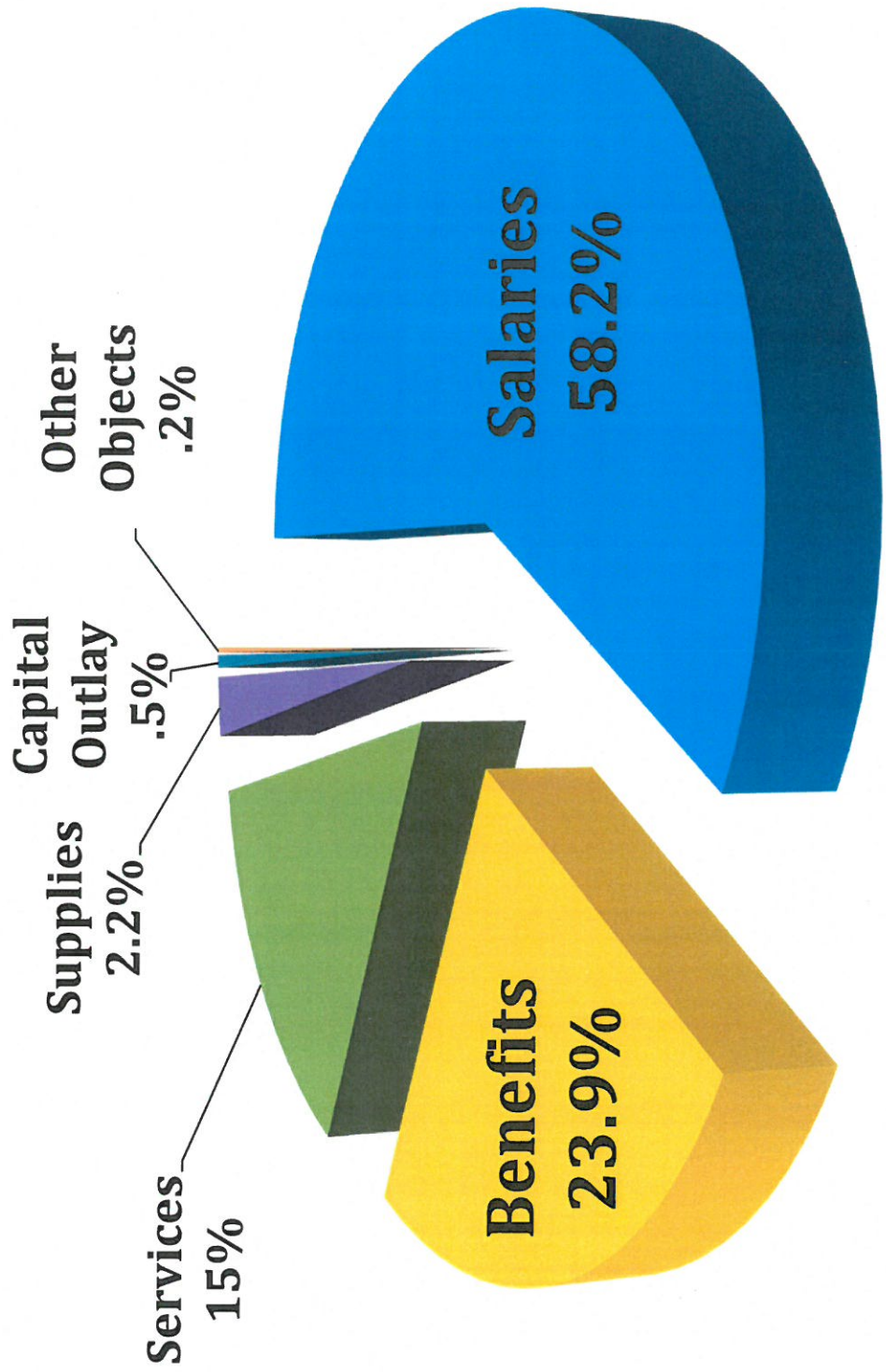
FYTD Revenue - \$22.1M



Monthly Expenditures by the Numbers

February			
FY18		\$	%
Forecast	Actual	Variance	Variance
\$3,820,000	\$3,523,761	\$296,239	7.75%

February Expenditures = \$3.5M

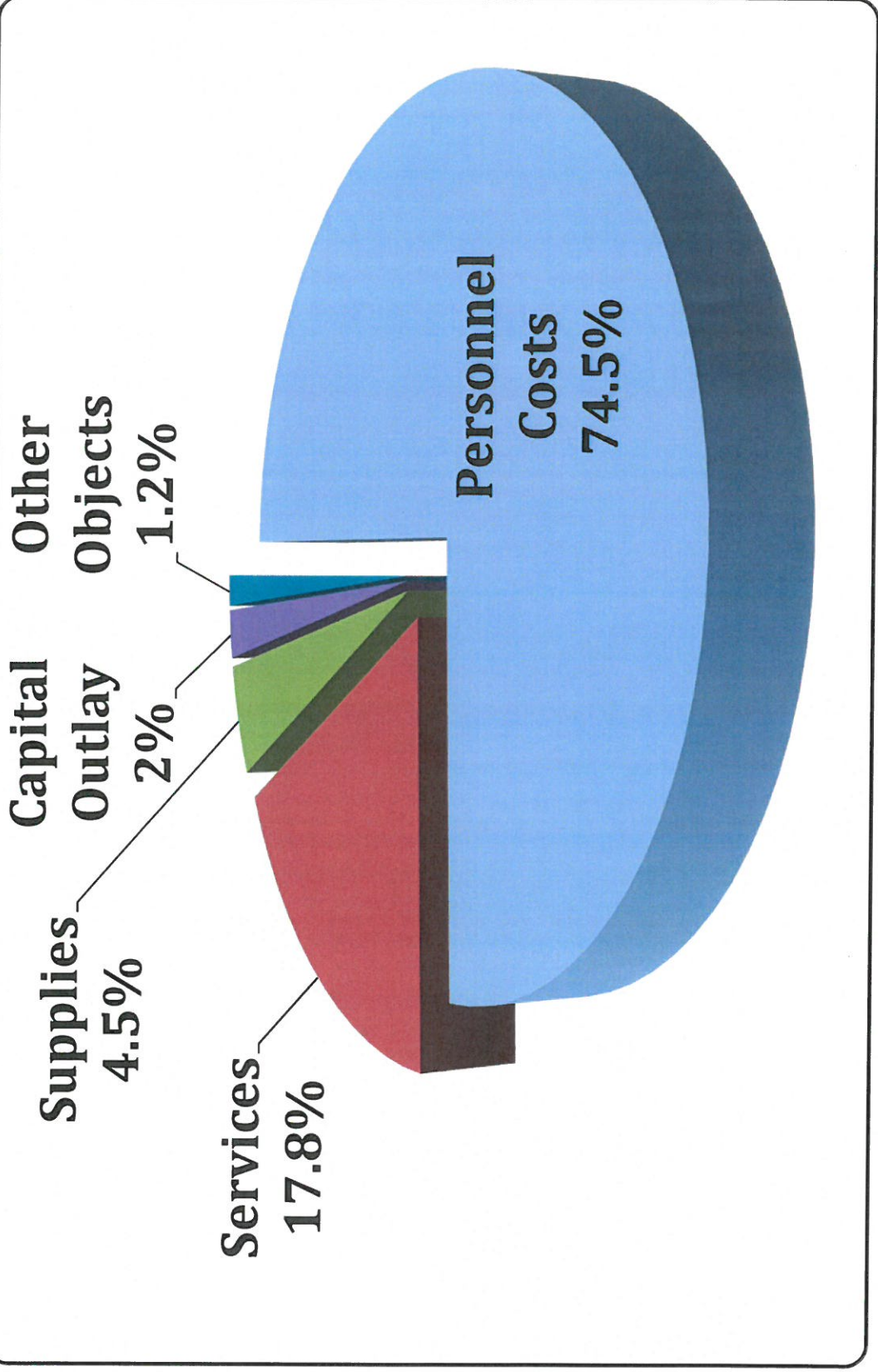


Fiscal Year to Date Expenditures by the Numbers

July 1, 2017 to February 28, 2018

FY18		\$	%
Forecast	Actual	Variance	Variance
\$29,384,623	\$29,149,004	\$235,619	0.81%

FYTD Expenditures - \$29.2M



Bottom Line Monthly Cash Balances 2/28/2018

	FY18 Forecast	FY18 Actual	\$ Change	% Change
Revenue	\$30,911,599	\$29,407,027	(\$1,504,572)	-5.12%
Expenditures	29,462,227	29,226,608	235,619	0.81%
Excess of Revenue (under) Expenditures	1,449,372	180,419	(1,268,953)	
Beg. Cash Balance	21,505,668	21,505,668		
Ending Cash Balance	22,955,040	21,686,087	(1,268,953)	
Outstanding P.O.s	(3,078,974)	(3,078,974)		
Unencumbered Balance	\$19,876,066	\$18,607,113	(\$1,268,953)	

Educational Focus on Financial Facts:

**House Bill 920
Impact to Tax Rates**

Tax Year 2017 / Collection Year 2018

Year	Voted	Res/Ag	Other
Approved Tax Rate	Tax Rate	Tax Rate	Tax Rate
< 1978	30.78	7.84	8.55
1984	5.40	2.15	2.46
1988	4.45	2.03	2.63
1993	7.20	3.82	4.94
2004	6.50	6.07	6.39
2011	6.00	5.60	5.96

TY2017 Tax Rates Compared to TY2016 Tax Rates for Residential

Voted	TY2016	TY2017
30.78	8.40	7.84
5.40	2.30	2.15
4.45	2.18	2.03
7.20	4.09	3.82
6.50	6.50	6.07
6.00	6.00	5.60

TY2017 was a Triennial Update

Residential Tax Rates per Operating Levy

